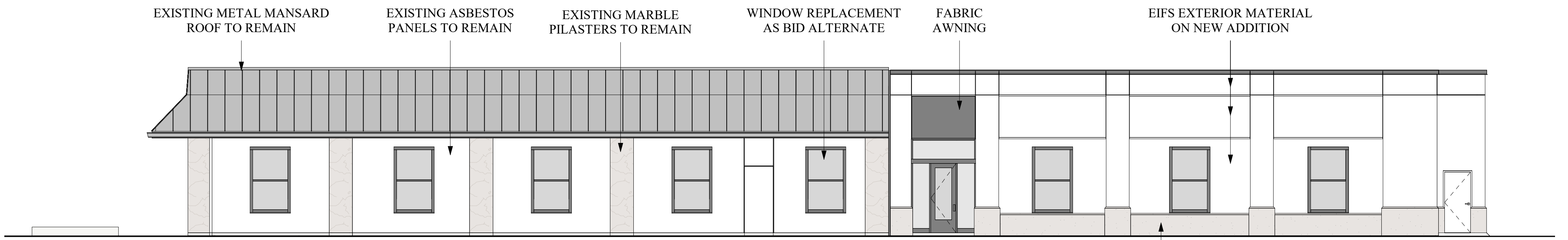


EAST

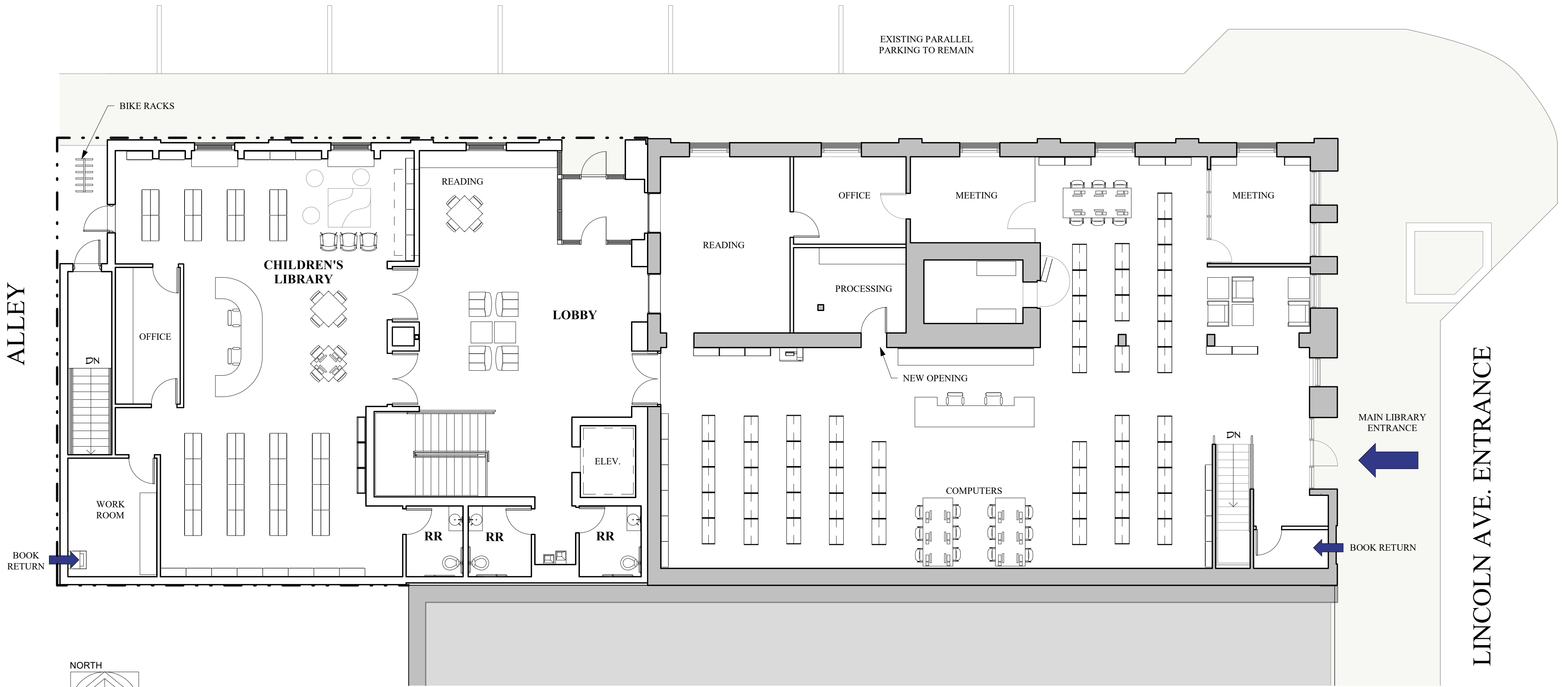
WEST



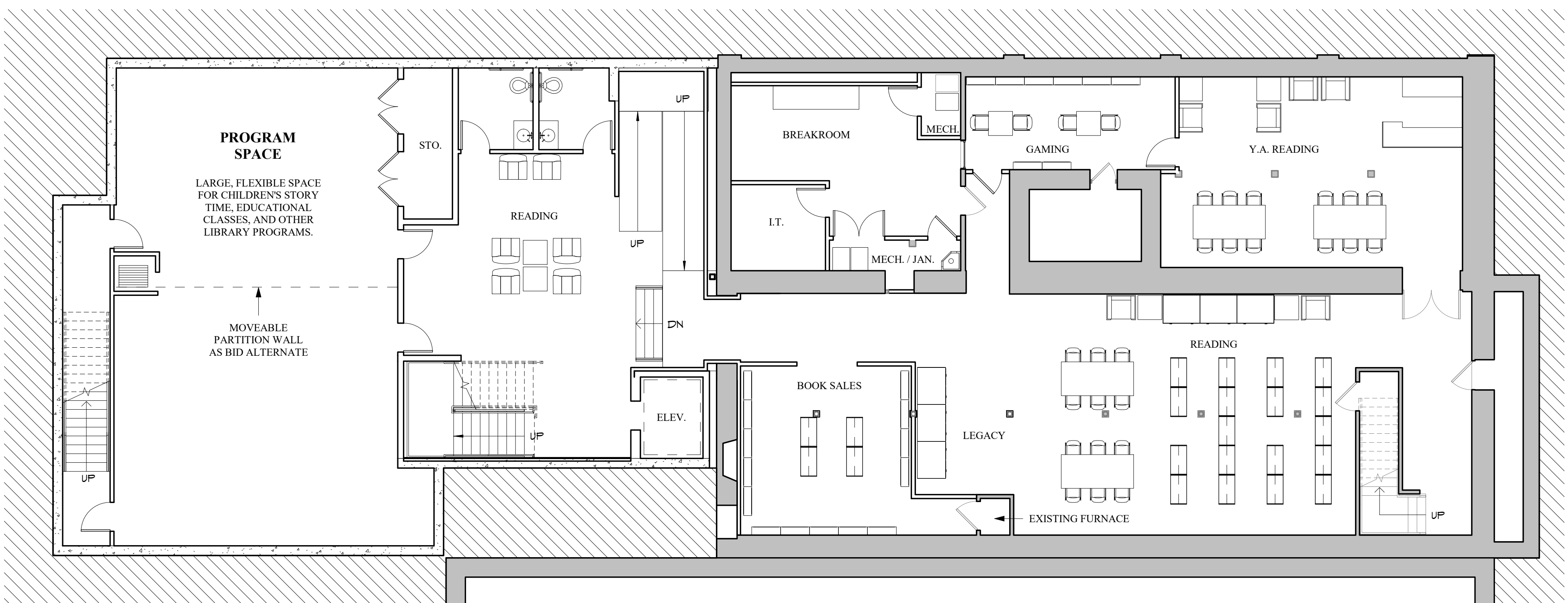
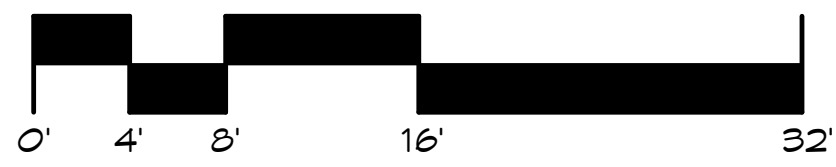
NORTH

← EXISTING    ADDITION →

STONE BASE AS BID ALTERNATE



NORTH  
GROUND FLOOR-Presentation  
1/8" = 1'-0"



NORTH  
LOWER LEVEL-Presentation  
1/8" = 1'-0"

# COMMISSION WORK SESSION

WAMEGO PUBLIC LIBRARY

10-5-21

